



LINEN EFFECT UNISEX SHIRT

MOD:
174

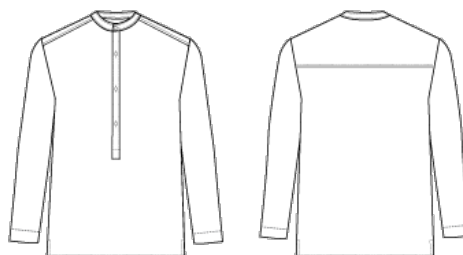
Bohemian relaxed fit shirt with mao collar and long sleeves without cuffs. Polo-style front fastening with buttons. Light and fresh fabric imitates linen with a rustic look.

AVAILABLE IN SIZES XXS-XXL

DETAILS

100% RAYON

MODEL



WASHING INSTRUCTIONS





